



**Est. 1973  
COLUMBIA, SC**



# **NEWSFLASH**

## **February 2018**



## International Plastic Modelers' Society/USA Membership Application / Renewal Form

New  Renewal  IPMS #: \_\_\_\_\_

Name: \_\_\_\_\_

Address: \_\_\_\_\_

City: \_\_\_\_\_ State: \_\_\_\_\_

Zip Code: \_\_\_\_\_

Phone: \_\_\_\_\_ E-Mail: \_\_\_\_\_

Chapter Affiliation, if any: \_\_\_\_\_

<b>Junior</b> (17 years or younger)	\$17.00	_____	Date of Birth: _____
<b>Adult</b>	One year	\$30.00	_____
	Two years	\$58.00	_____
	Three years	\$86.00	_____
<b>Canada &amp; Mexico</b>		\$35.00	_____
<b>Foreign</b>	Surface	\$38.00	_____

**Family** (1 set of Journals) \_\_\_\_\_ ← Adult fee + \$5.00 # of cards? \_\_\_\_\_

Your Signature: \_\_\_\_\_

If recommended by an IPMS member, please provide his/her:

Name: \_\_\_\_\_ IPMS #: \_\_\_\_\_

### PAYMENT OPTIONS:

Cash  Amount: \_\_\_\_\_  
Check  Check #: \_\_\_\_\_ Amount: \_\_\_\_\_  
Credit Card  Master Card  Visa   
Card Number: \_\_\_\_\_  
Exp. Date: \_\_\_\_\_ / \_\_\_\_\_

Billing Address, if different than above -

Address: \_\_\_\_\_

City: \_\_\_\_\_ State: \_\_\_\_\_

Zip Code: \_\_\_\_\_

Hello Swamp Foxes,

Welcome to February 2018 Newsletter.

I hope everyone has had plenty of time at the workbench over the last month and that we get to see your hard work at the next meeting, Wed 21st February in Lexington Main Library, 18.00 - 20.00, bring your Builds and Works in Progress.

The January meeting was somewhat depleted due to the bad weather, 9 members braved the weather and a good show and tell was had with all club business and elections put back until the February meeting.

With regards to the Elections here is a letter to the club members from Ralph Nardone.

An open letter to the members of the IPMS/USA Mid-Carolina Swamp Fox Modelers, 29 January 2018  
As you know, the club will be holding officer elections at the next meeting on 21st February 2018. A few suggestions, if I may...

1. These elections should be secret ballot.
2. Only members in attendance (and in good standing) should be allowed to vote (no absentee/proxy votes from members not in the room or guests).
3. Anyone nominated must be in the room and be able to accept or decline the nomination.
4. The winners are determined by a simple majority of voters present.
5. Existing officers must be nominated and re-elected (even if unopposed) if they wish to retain their current office.
6. Elected officers are President, Vice-President, and Treasurer. The positions of Webmaster and Newsletter Editor are appointed positions.

I have been approached by several individuals who have asked me if I am interested in the office of Club President. After much thought, I have decided that, if nominated, I will accept and run. In line with that, I have put together a platform.

The IPMS/Mid-Carolina Swamp Fox Modelers should, in the next three to six months:

1. Develop a club roster that is made available to each member in good standing.
2. Develop a list of Honorary Members.
3. Develop programs to recruit new members and retain them.
4. Reach out to former members and invite them back.
5. Request more input from each and every member.
6. Become more active locally.
7. Become more active in hobby shop events at all of the local shops.
8. Have more interaction with the nearby modeling groups, no matter the affiliation.
9. Have some sort of educational program or demonstration at each meeting.
10. Discuss new club SWAG (T-shirts, etc.).
11. Discuss a new club banner for events.
12. Discuss the possibility of implementing a monthly kit raffle.
13. Discuss an annual kit auction, too.

My qualifications?

1. I've been involved with the hobby since 1973.
2. I've been involved with model clubs since 1985.

3. I was an officer with IPMS/Flight 19 from 1991 until 2001.
4. I was President of IPMS/Flight 19 from 1993 through 2001.
5. I am currently the treasurer of the AMPS Central South Carolina Wildcats.
6. I was a member at large on the 1999 IPMS/USA Convention Committee.
7. I was the Seminar Coordinator for the 2016 IPMS/USA Convention.
8. I was the Logistics Coordinator for the 2016 AMPS International Convention.
9. Most importantly, I want to see this club grow and thrive!

Respectfully,

Ralph Nardone  
IPMS 33984  
AMPS 2540

Also Please remember to bring your dues payment for 2018 to this month's meeting and give it to Tom so you can be "a member in good standing" and vote. Currently only Jodie and Ralph, Jim Hamilton and John Currie are paid up.

URL for the Club website <https://ipmsmidcarolina.com>.



HMS Howe August 1942 on leaving the Fairfield shipbuilders Yard on the Clyde

# SUPPORT THE LOCAL HOBBY STORES



## Hobby Town USA

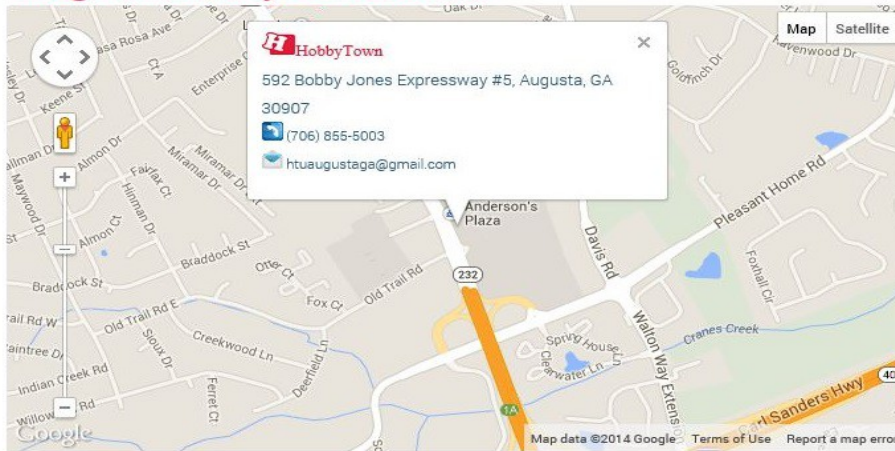
Hobby Shops

10120 Two Notch Rd, #5, Columbia, SC 29223


Cross Streets: Between Rivkin Blvd and Sparkleberry Ln Ext/Sparkleberry Ln

(803) 736-0959

## Augusta HobbyTown USA:



**NEW BROOKLAND RR**



405 State Street,  
West Columbia, SC 29169  
Tel: (803) 791-3958

All Scales, All Major Brands  
We Buy & Sell Used Lionel Trains

Joe L. Rucker  
Owner

# SUPPORT THE LOCAL HOBBY STORES

## Tamiya 1/350 HMS Prince of Wales



### What can we do with It ????????

The Answer is a Lot, It is not often that i build anything Straight Out of the Box. after building the USS Tangier from the Revell Hawaiian Pilot, i had the urge to build another Big ship (i am a 1/700 ship guy), i knew i had a Tamiya 1/350 scale British BB in the stash. After a couple of hours i had pulled it out, (yes it was at the bottom)

So, now what!!!

It was not going to be the Prince of Wales, but which of the remaining four of the class could i build using this kit. The answer is all of them, with a little research and work.

Below are the major refit dates after which the Tamiya HMS King George V kit is needed. prior to the major refits the HMS Prince of Wales kit is the one you need.

HMS King George V, Major refit in Liverpool, Feb - July 1944.

HMS Duke of York, Major refit in Liverpool, Sept 1944 - March 1945.

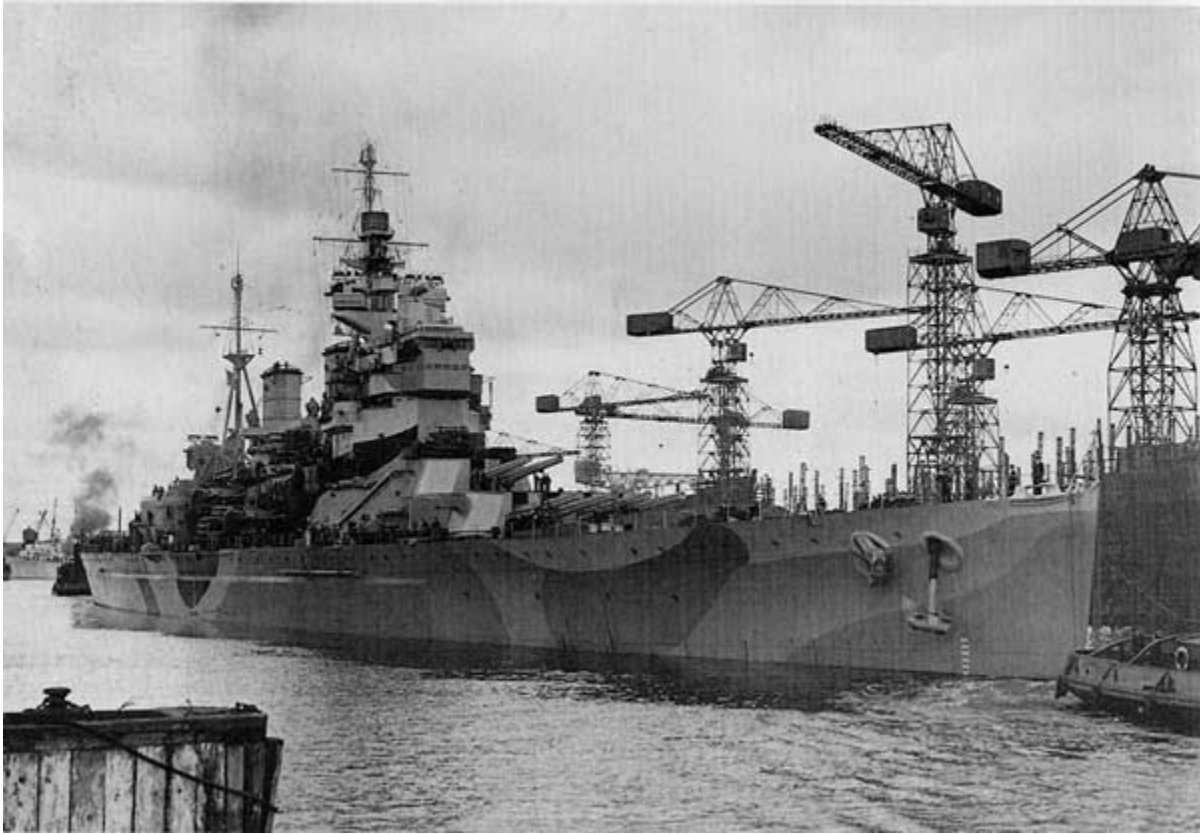
HMS Anson, Major refit in Devonport, June 1944 - March 1945.

HMS Howe, Major refit in Devonport, Jan - May 1944.

So which one to do, Well i did not want to mess around with the external degaussing coil on the King George V, as for the Duke of York and Anson, i plan on doing one of them post major refit, some interesting changes were added which i will detail at the end.

So HMS Howe it is.

## HMS Howe



Howe Preparing to leave the Fairfield yard

HMS Howe (pennant number 32) was the last of the five British King George V class. Built by Fairfield Shipbuilding and Engineering Company, she was laid down on 1 June 1937 and launched 9 April 1940. She was originally to have been named Beatty but this was changed to Howe, after Admiral Richard Howe. Howe was completed on 29 August 1942 after her building time was extended, as needed war supplies were diverted to work of a higher priority such as the construction and repair of both merchant ships and escort ships.

Howe joined the Home Fleet on 30 August 1942, Like her sister ship Anson, she spent the early years of her combat career in Arctic waters, covering convoys bound for Russia. On 31 December 1942, Howe and her sister ship King George V provided distant cover for convoy RA.51, which safely arrived in Loch Ewe on 9 January 1943. Howe and King George V also provided distant cover for convoy RA.53 on 1 March 1943 and helped to recover merchantmen whose ships had been sunk. In 1943 Howe was transferred to Gibraltar with King George V to take part in Operation Husky, the Allied invasion of Sicily; the US battleships Alabama and South Dakota substituted for their absence from the Home Fleet. The two British ships shelled Trapani naval base and

Favignana during 11–12 July. Based in Algiers, the pair also offered cover during Operation Avalanche-the Allied landings at Salerno-setting out on 7 September. On 14 September Howe and King George V escorted the surrendered Italian battleships Vittorio Veneto and Italia to Alexandria.

By the end of October 1943, Howe and King George V had returned to Britain. At the end of year, Howe underwent a long overhaul at Devonport, where a number of alterations were made. Her anti-aircraft armament was increased, changes were made to her radar, and her watertight integrity in the stern was improved. Modifications were accomplished in the officers and crew quarters for operations in tropical climates; these included changes in insulation, and the extensive use of air-conditioning equipment.

### Pacific operations

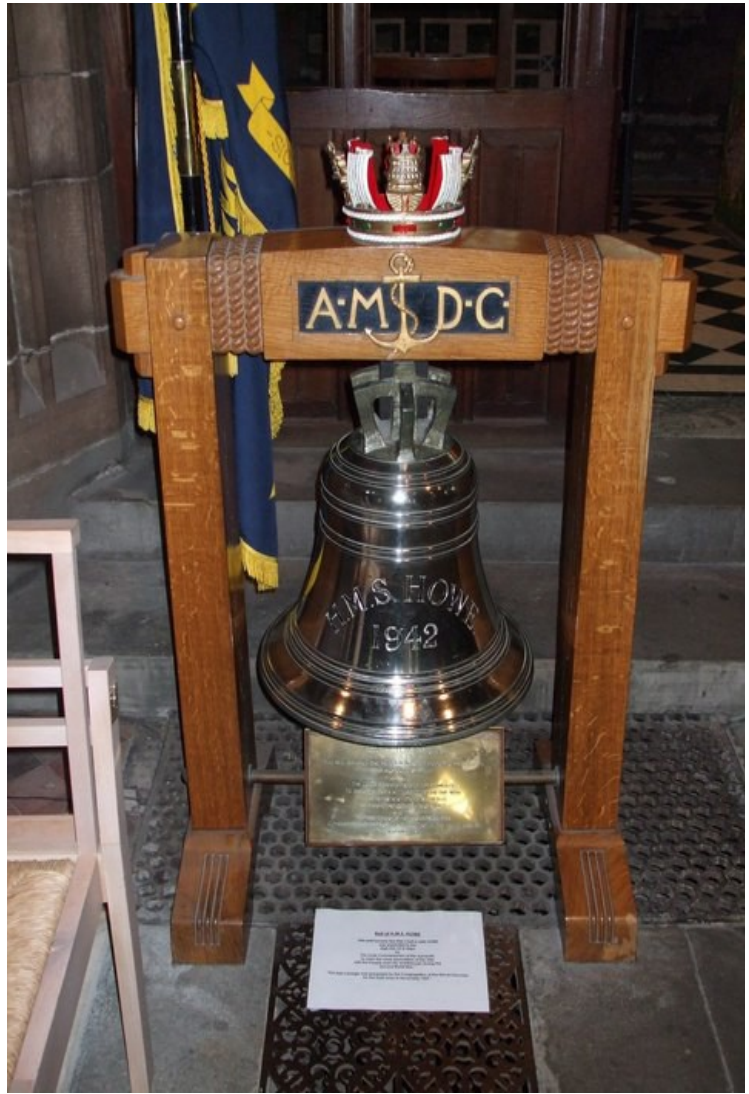
On 8 August 1944, Howe arrived at Trincomalee in Ceylon to join the Eastern Fleet. She was the first modern British battleship to be deployed in eastern waters since the loss of Prince of Wales in December 1941. Howe was put into action quickly, providing cover for carrier based air operations against targets in Sumatra. In December she moved to Sydney, where she sailed to Auckland, New Zealand, for a flag-waving visit. In February 1945, Howe and King George V sailed from Sydney to begin operations in earnest in the Pacific theatre; together with four carriers, five cruisers and fifteen destroyers, they made up Task Force 113.

The first major undertaking for Task Force 113 (now redesignated TF.57) was Operation Iceberg-offshore support for the US landings at Okinawa-which got under way on 1 April 1945. The force was subjected to sporadic Japanese kamikaze attacks, but the two ships emerged unscathed from these actions. Howe's anti-aircraft batteries also succeeded in shooting down an attacking kamikaze plane. The two ships' principal roles were air defence and land bombardment, the latter being carried out very accurately, particularly by Howe against anti-aircraft installations on the island of Miyako, half way between Okinawa and Formosa.

### Post war

By the first week of June 1945, *Howe* was back in Sydney, and almost immediately it was decided to send her for a refit in Durban. It was here that she saw out the remainder of the war. She was relocated back to Portsmouth by January 1946. In 1951, *Howe* was placed in reserve and towed to Devonport. She was ordered scrapped in 1957. On 27 May 1958, *Howe* was towed to Inverkeithing to be broken up by Thos W Ward. The Royal Navy presented the ships bell to St Giles' Cathedral in Edinburgh. In 2012, it was reported that parts from one of the gun turrets may still exist, having been re-used as a turntable at Dounreay nuclear laboratory.







Operations in the Med off Sicily 1943



A visit by King George V

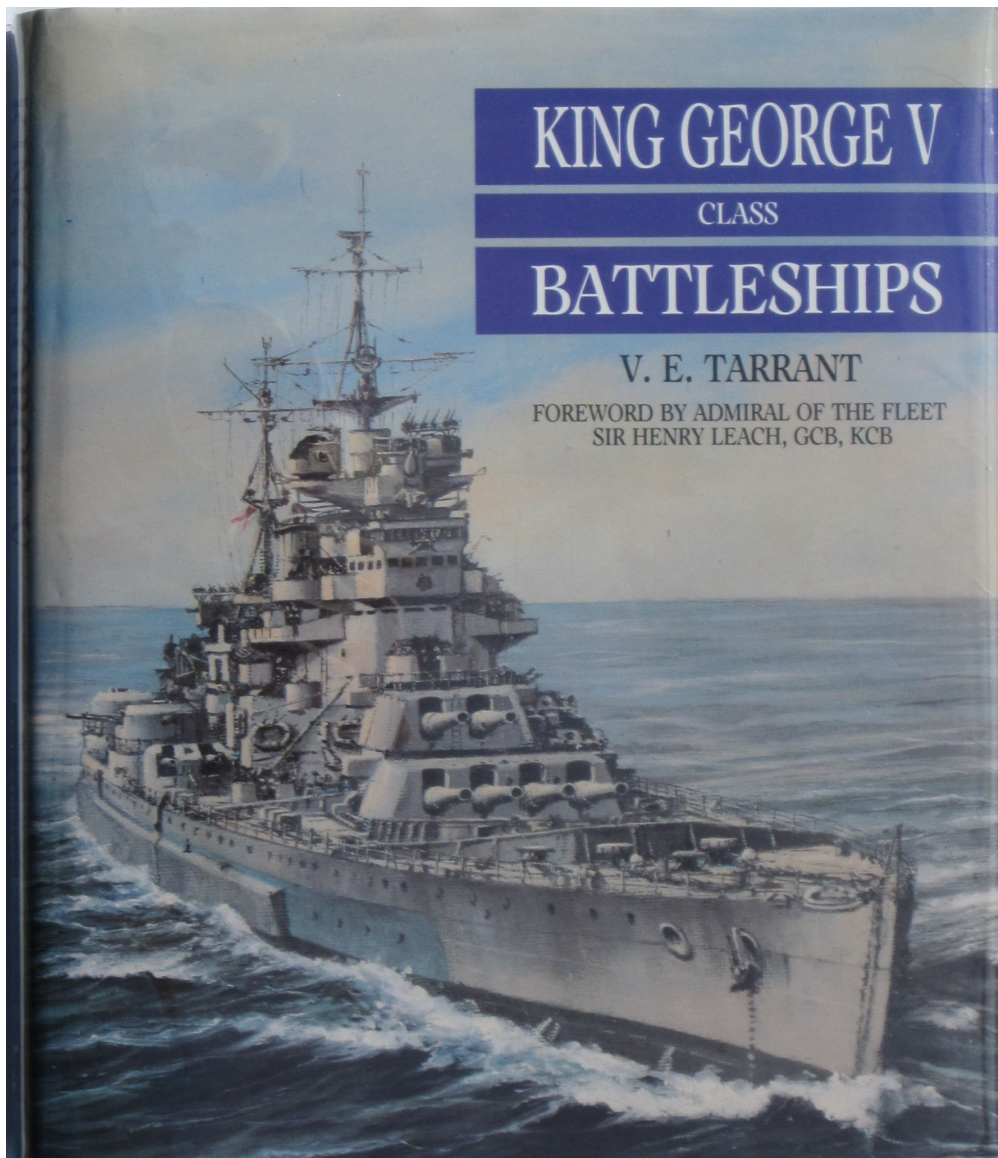


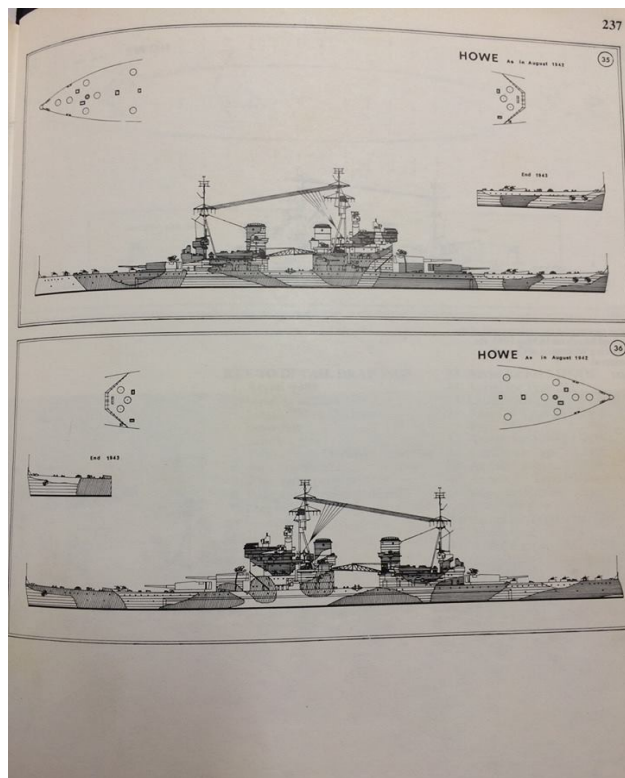
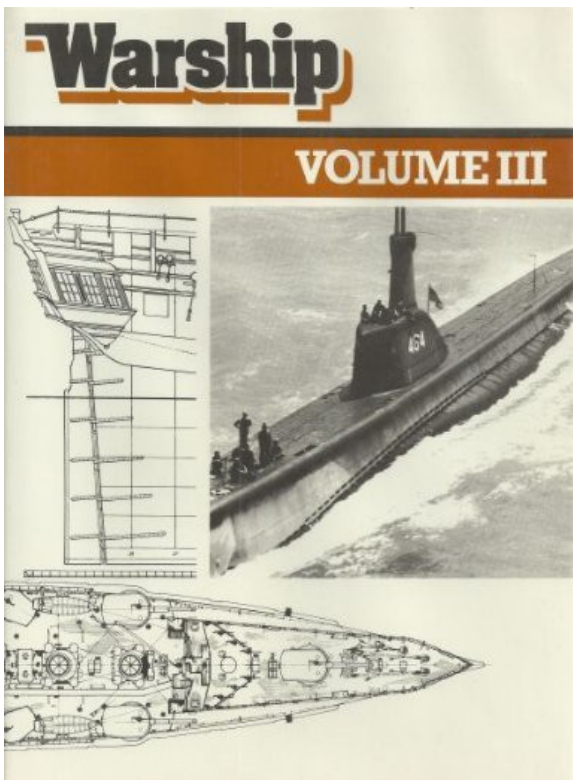




## Modeling HMS Howe

My main references for my Howe build are King George V class battleships by V.E. Tarrant and the one i really rely on is in Warship Volume III, It is in four parts by Robert Dumas, the four parts cover everything except the ships service lives, it covers weapon and equipment fit and all the changes, Camouflage schemes carried by all five, worth buying if you can find a copy. All the usual areas were also used to gather information, Internet etc.





### DUKE OF YORK As in November 1942

12  
**DUKE OF YORK**  
MARCH 43 - SEPT 44  
HULL G10 - SUPERSTRUCTURE G15  
Type 281 air warning  
Type 284 500 Main armament  
4 x 285 acoustics on HaCS MW directors  
6 x 282 Pom Poms  
Later reduced to 5  
Dec 41 273 fitted on Starfish  
20mm x 7 reduced to 6, 2 on No 2 Plat + Aff Deck  
April 42 273 20mm increased to 18, 3 on No 5 Plat  
March 42 284 20mm added  
June 2 x twin 20mm added on No 1 Platform  
6 x single Removed from No 1 Platform

### PART 2 HOWE 1942 - DECEMBER 1944

**ADMIRALTY INTERMEDIATE DISRUPTIVE TYPE.**  
507A, B5, B6, 507C

TYPE 281 air warning  
TYPE 284 main armament  
TYPE 285 x 4 HaCS Mk V  
TYPE 282 x 5 - Pom Poms  
TYPE 273 on Starfish - Surface warning Radar

16 Single 20mm 7 x F, 3 x F, 4 x No 1 Plat, 4 x ABV.  
June 43; 22 Single 20mm added + 2 transferred  
from abreast X turret = 24

8 x Catapult deck, 2 wings Admirals bridge, 2 in  
Place of 4 x Searchlight Aft Funnel, 2 on Wai Deck  
10 abreast B turret.

Added	Removed	Completed	Remnant No
-01-37	21-02-39	01-03-40	41
-01-37	02-05-39	21-03-40	53
-05-37	28-02-40	04-11-41	17
-47-37	24-02-40	22-06-42	79
1-06-37	09-04-40	29-08-42	32

V (tons)	
ED	ull load
3 830	2 770
2 410	7 400
1 620	38 030
	3 730
	60
	255
	42 075

To do a build like this used to entail lots and lots of scratchbuilding, but with the 3D printing and some great designers, 90% of the scratch work has been cut out, unless you want to do it that is.

So what have i got together for my Howe build!!!

Base from Hobby Lobby,  
 Finials from Total Navy,  
 Laser cut deck by a company called Hunter,  
 2pdr Pom Pom barrels from master model,  
 20mm Oerlikons from L'Arsenal,  
 HACS Mk.V directors and 271/273 radars from Model Monkey(Shapeways.com)

14" Turrets, 5.25 Turrets, Liferrafts, Ammunition lockers, Mushroom vents round and square, Boat set specific for Howe, Doors, Hatches, Flota nets, Bollards, Oerlikon gun tubs and Bridge/lookout bino's from Micro Master (Shapeways.com)

**W35016**  
FOR TAMIYA(78011)

350 Scale HMS Navy battleship  
**PRINCE OF WALES**



WOODEN DECK

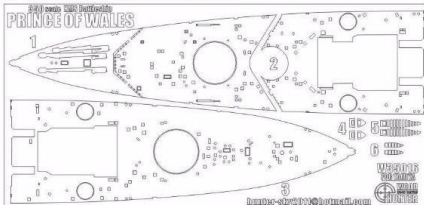
**NOTE:**

- .Please first see if the parts are complete.**
- .Please read the instructioin carefully before making it.**
- .Don't put it in the high temperature or in the liquid.**
- .Don't pulling , crimpping or squeezing.**
- .please use the glue carefully.**

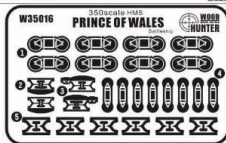
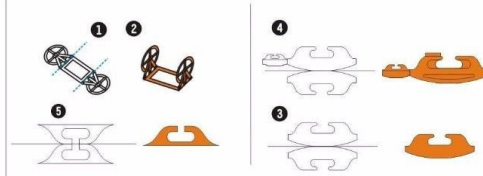
- Note of Making PE:**
- .Bend the red upward**
  - .Bend the blue downward**

- .The white edge number is for the wooden deck number**
- .The circle number is for PE part number**

**Panel Pictures:**



30CM  
Anchor Chain

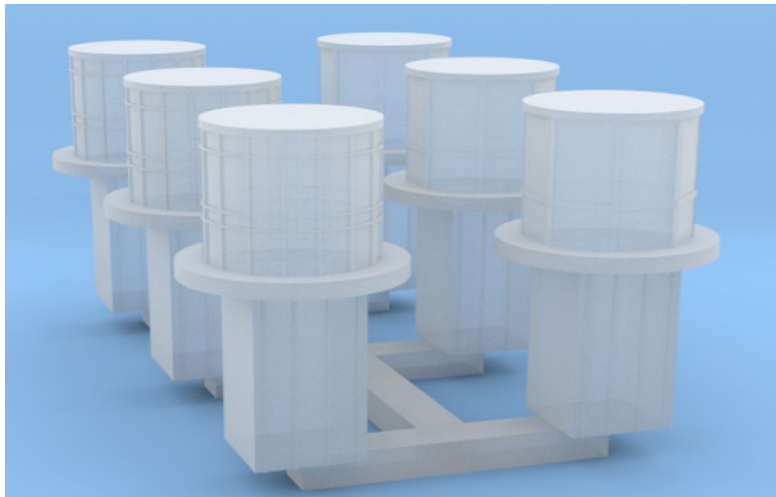
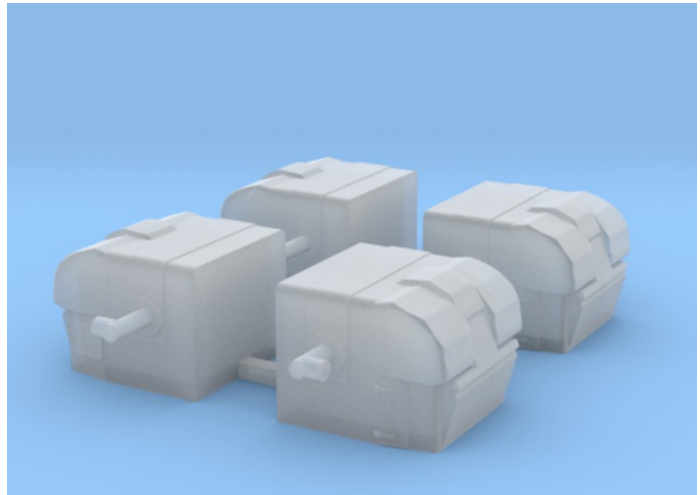


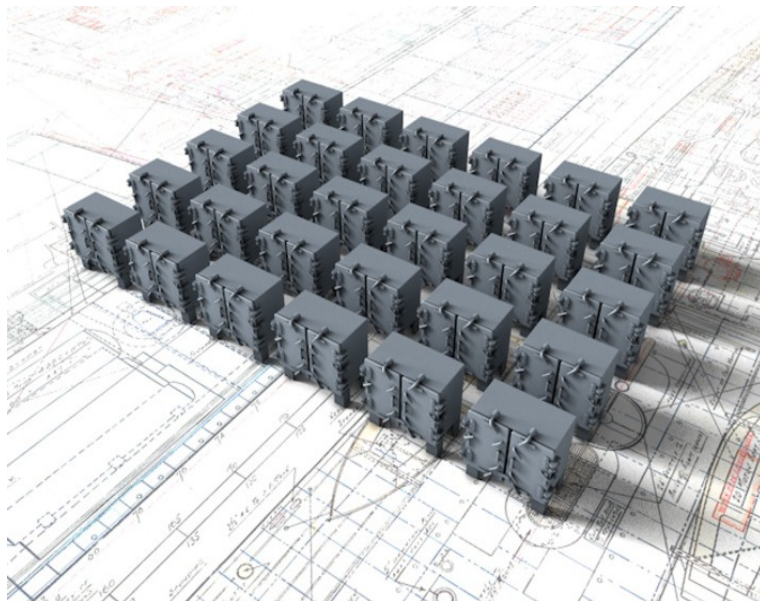
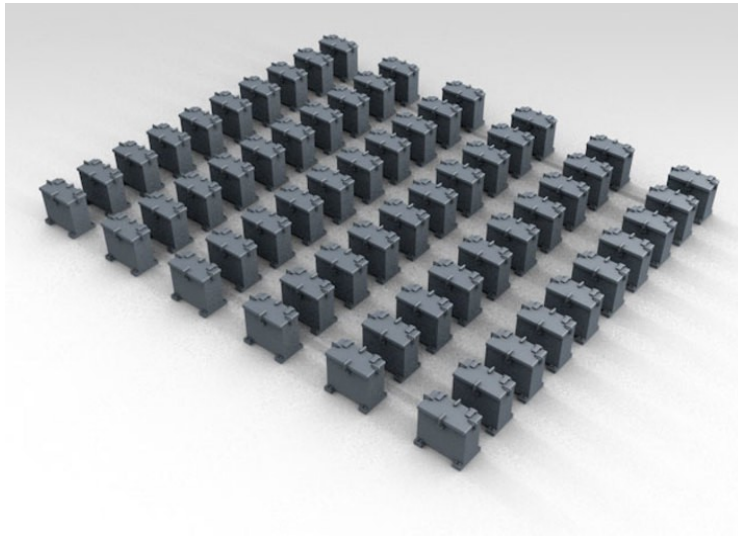
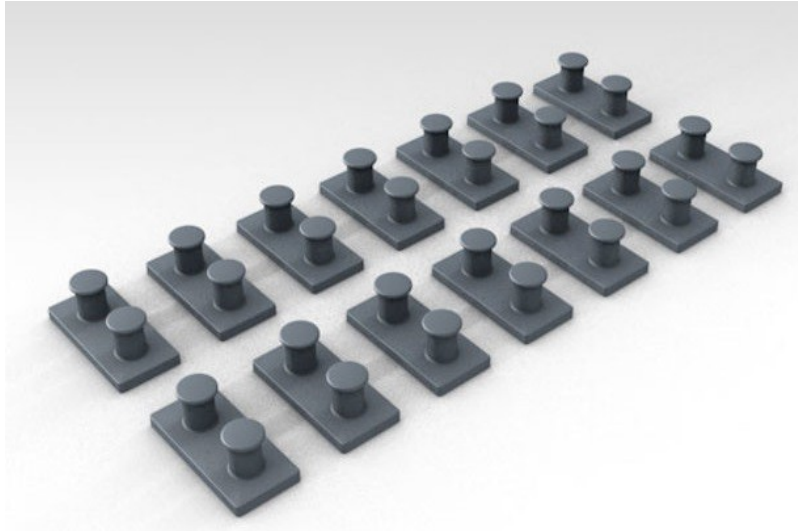
**General Arrangement:**

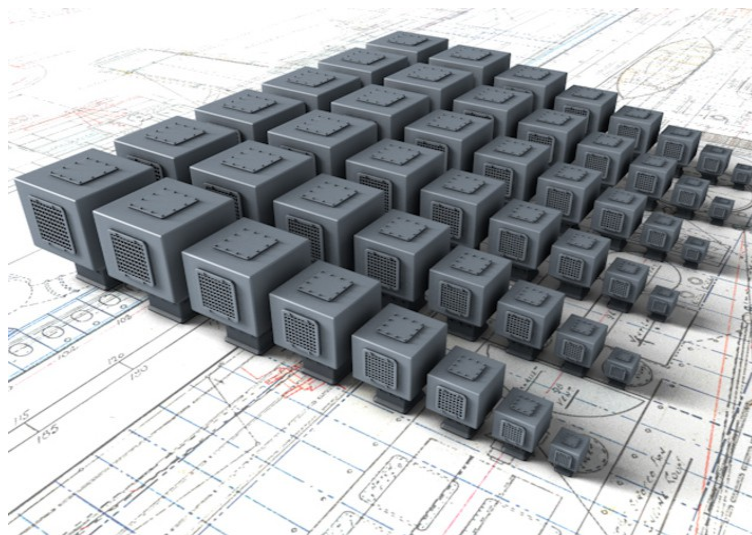
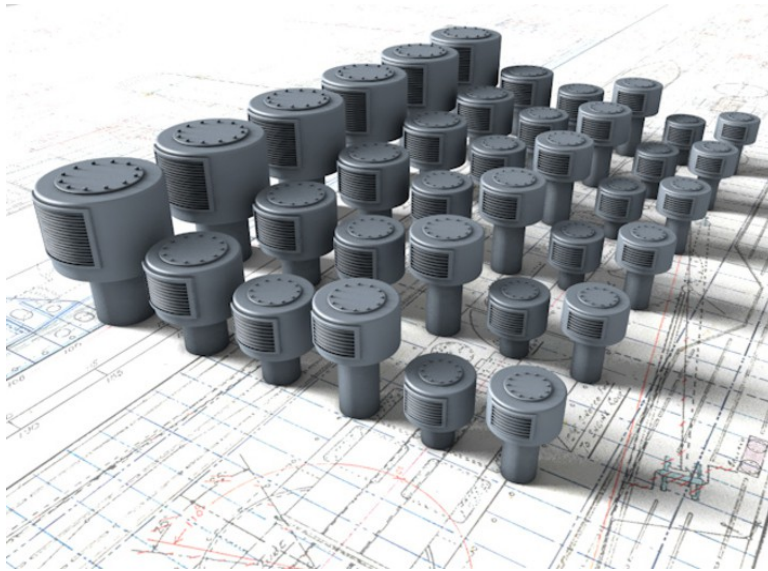


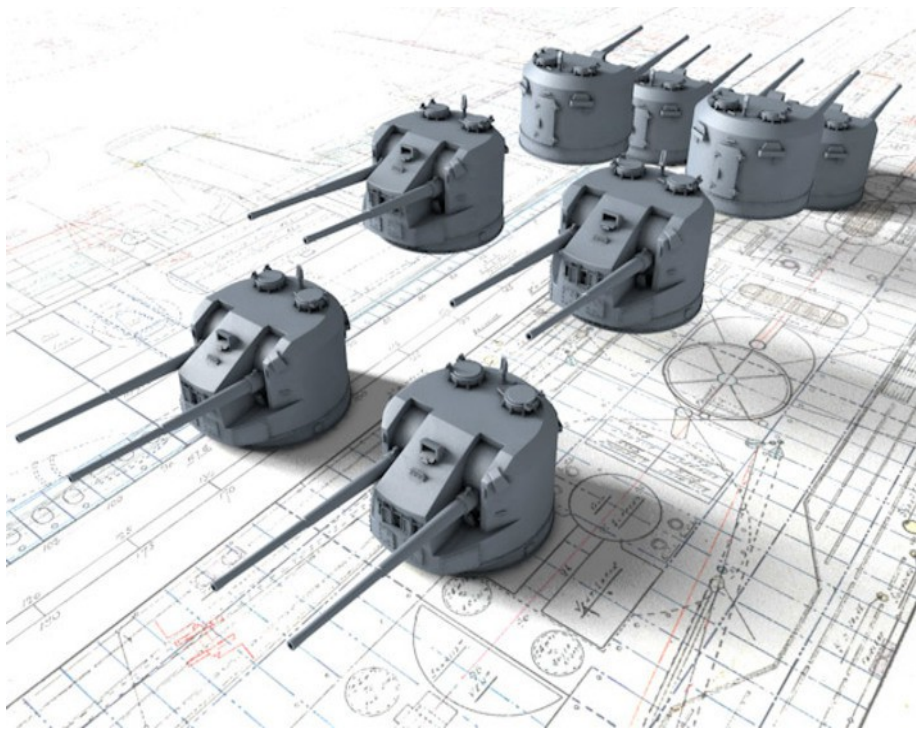
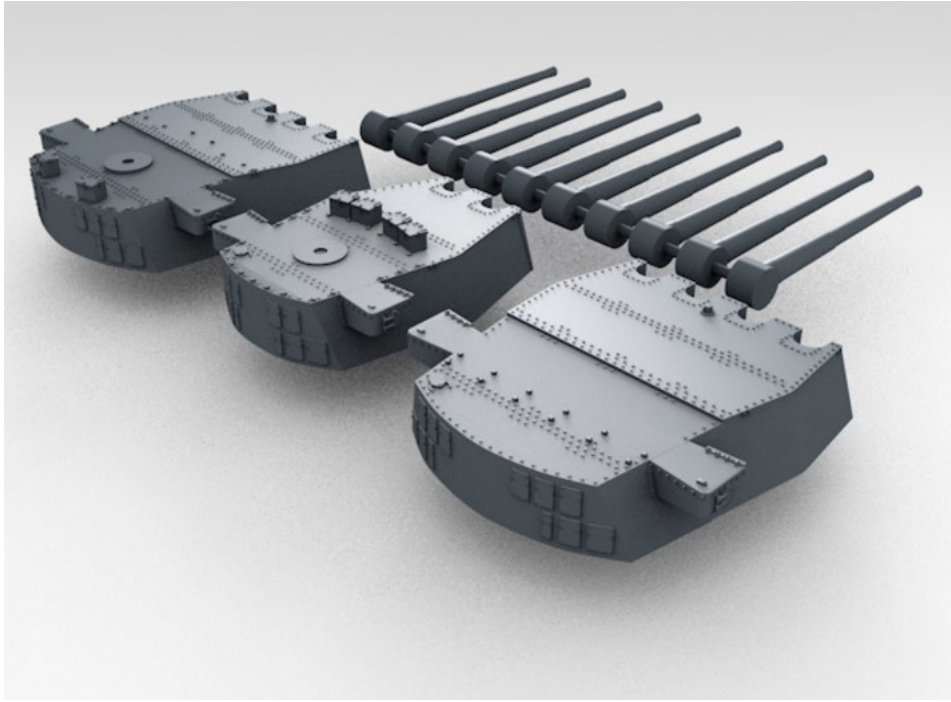
hunter-sky2011@hotmail.com

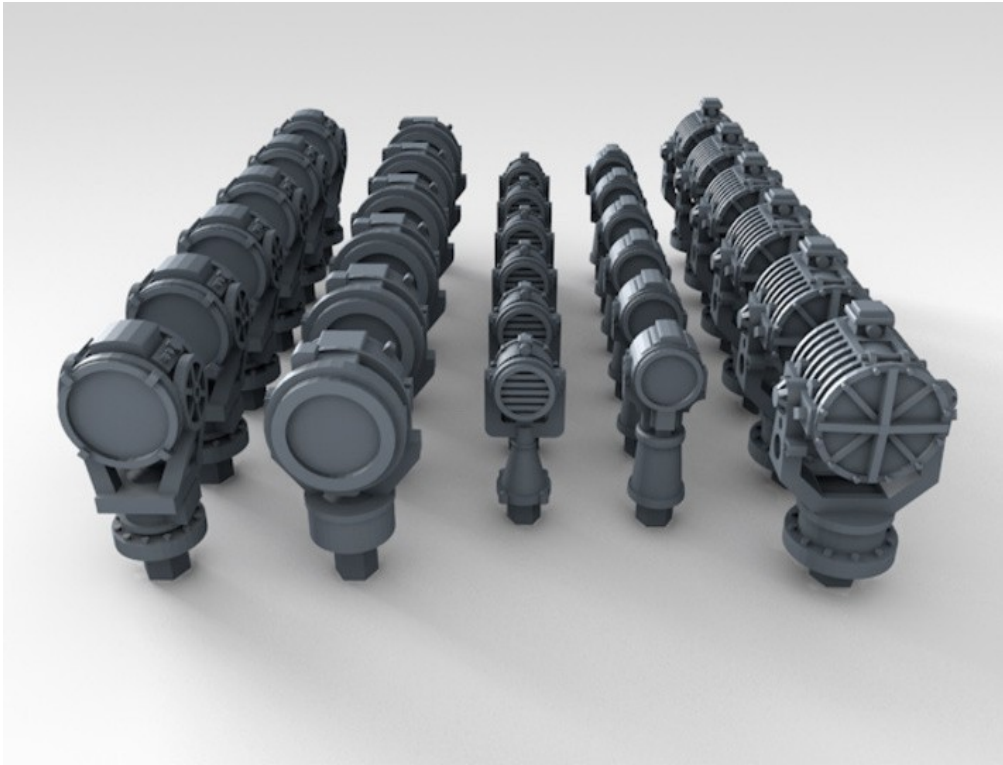
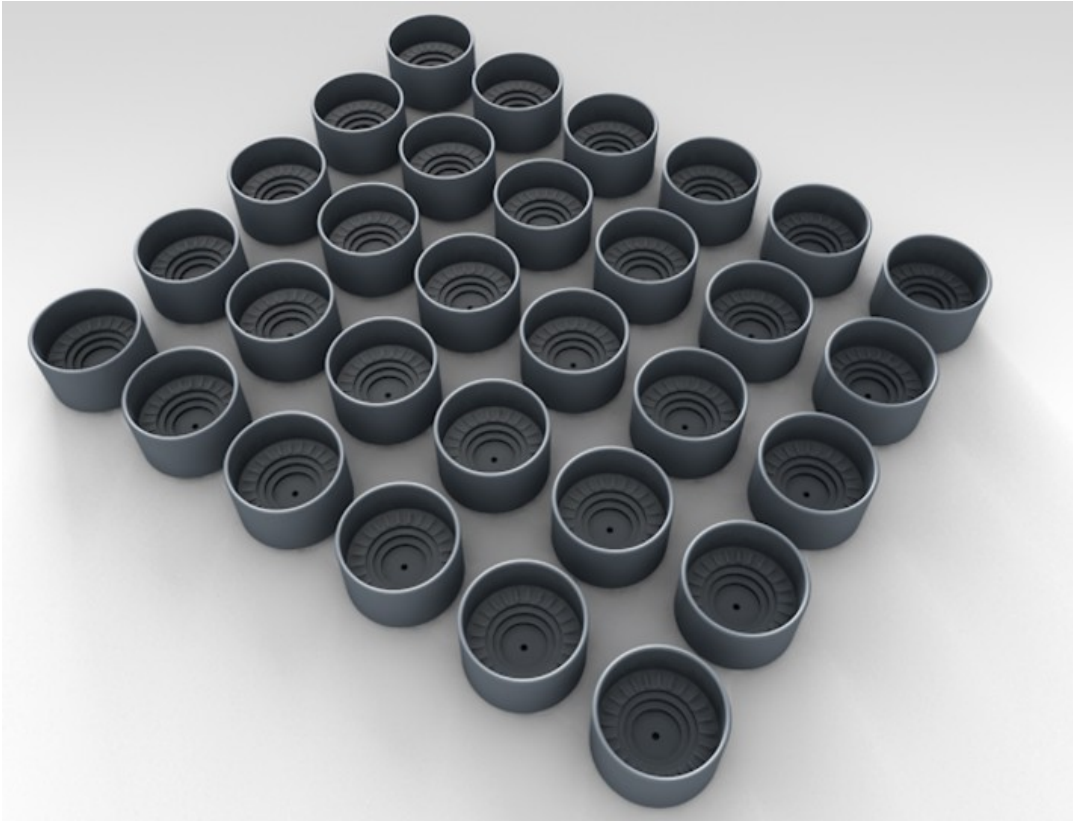




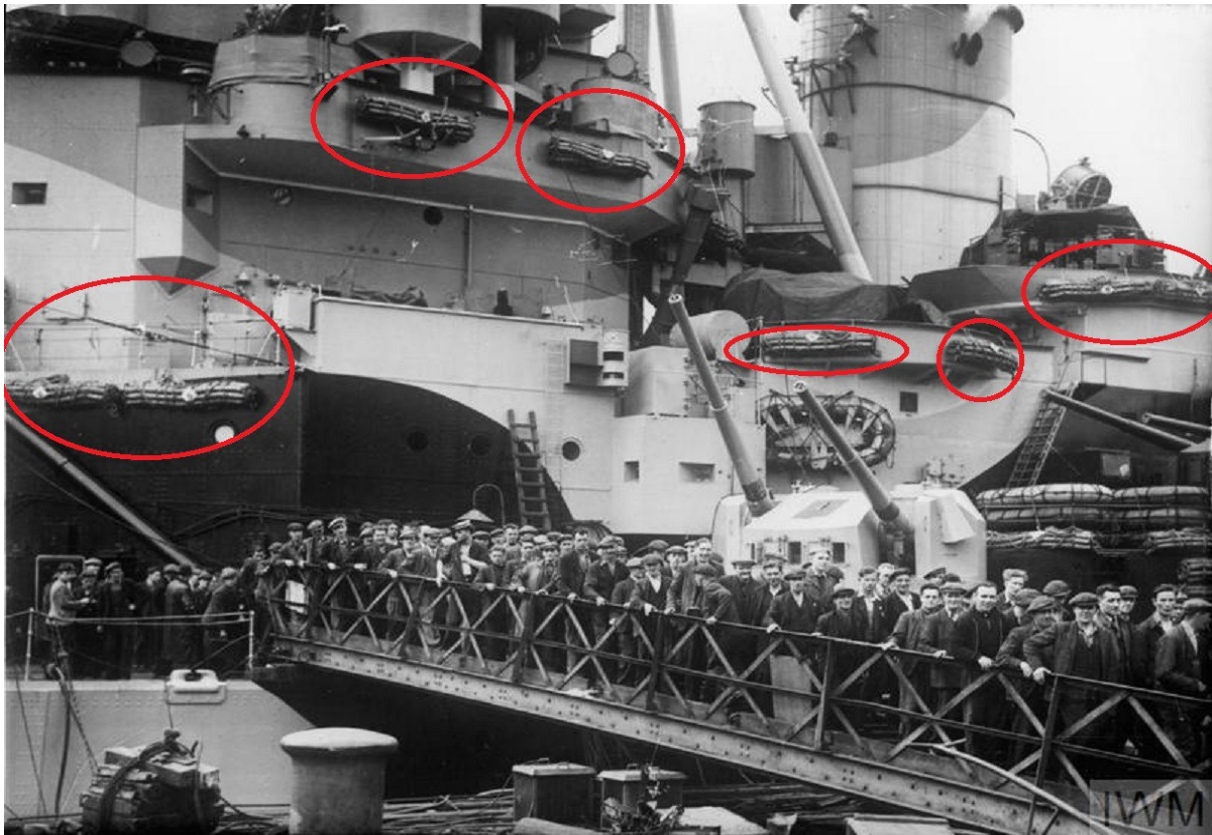
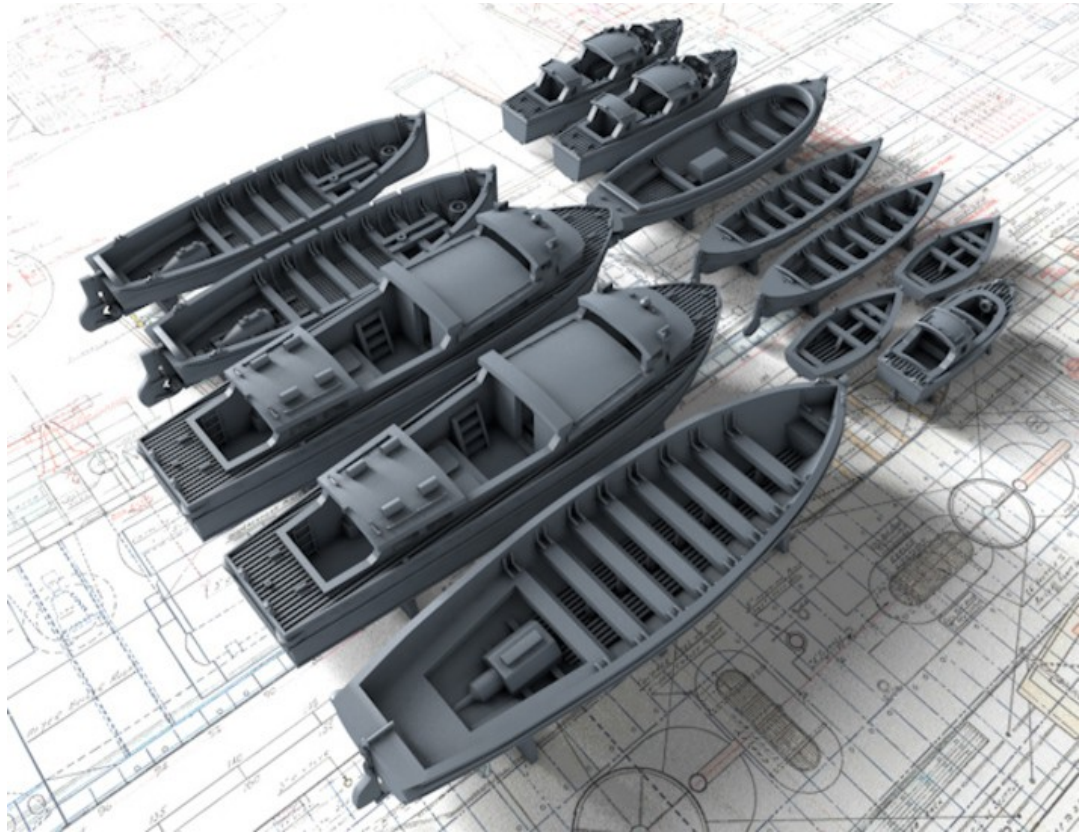


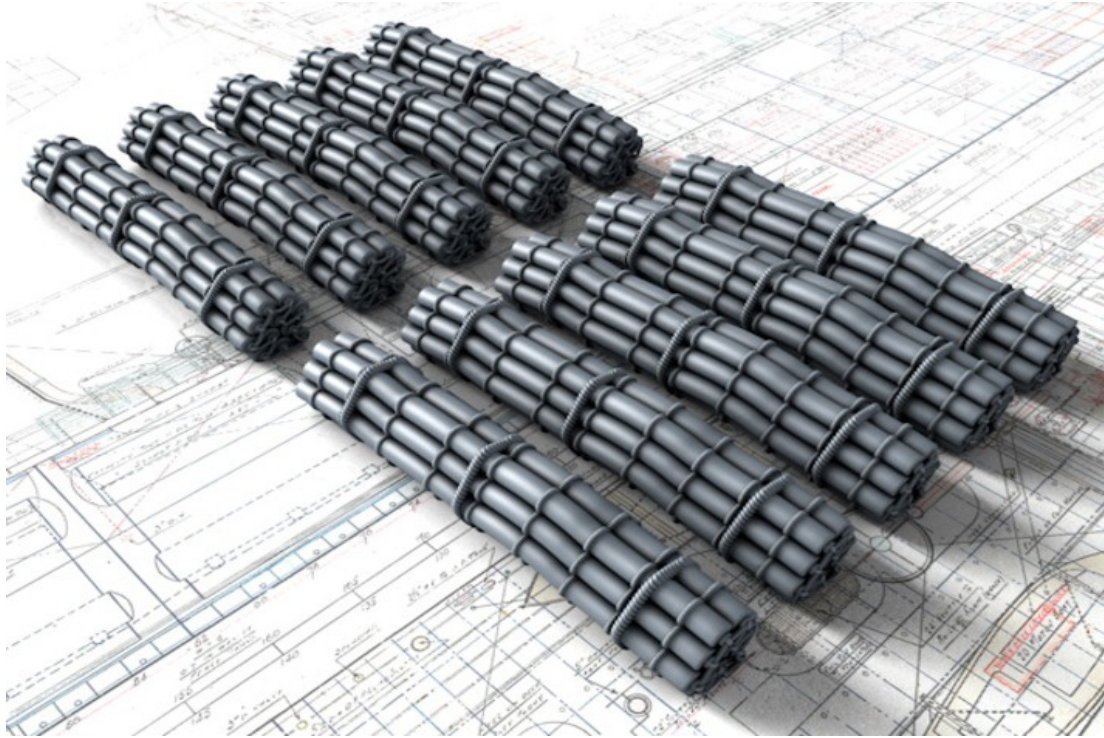






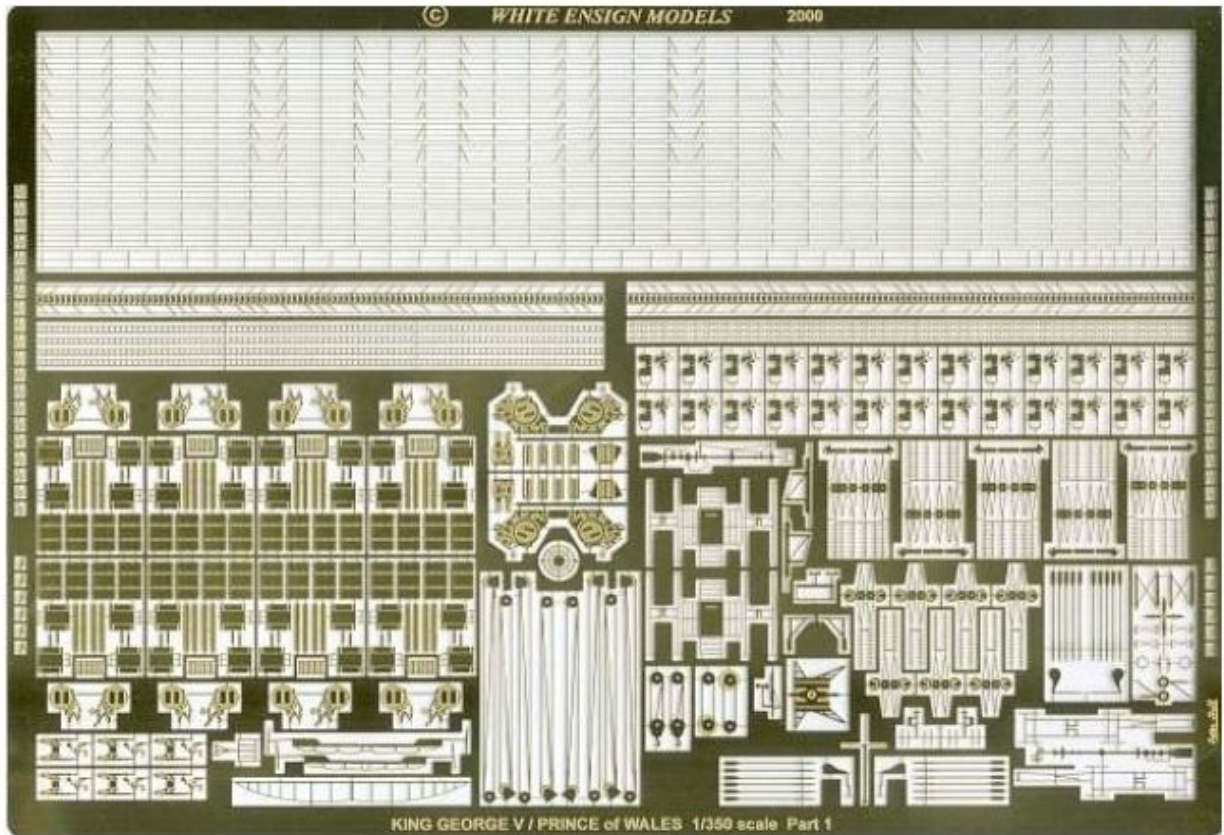






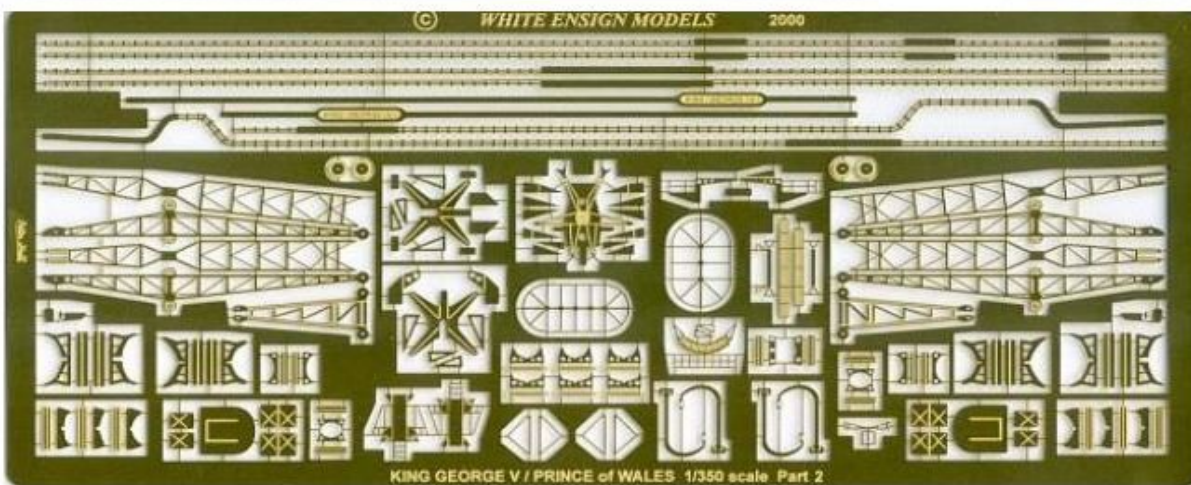


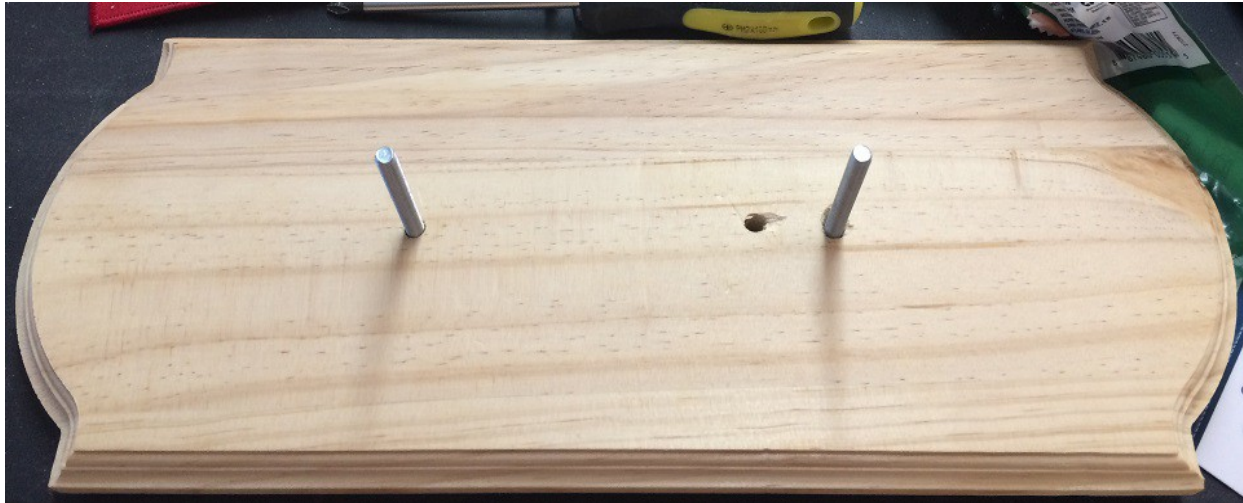
Oh and the White Ensign Models PE set

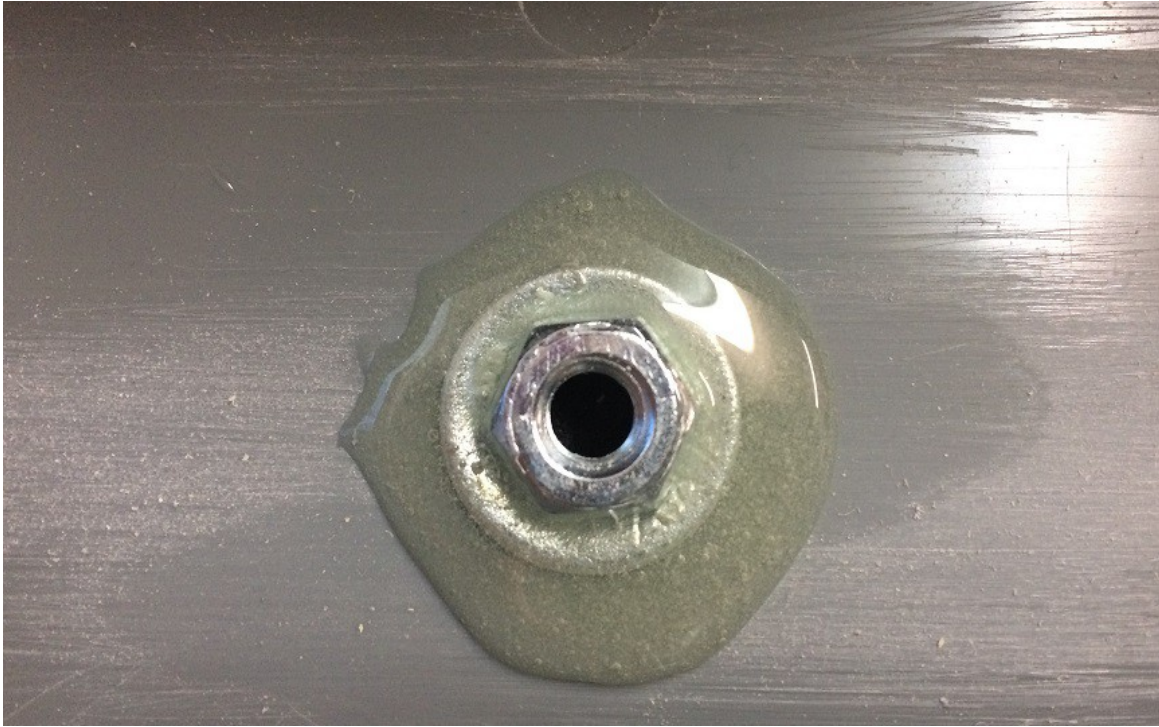


WEM 1/350 King George V Class (PE 35019)  
Image 1 of 2

CLOSE X



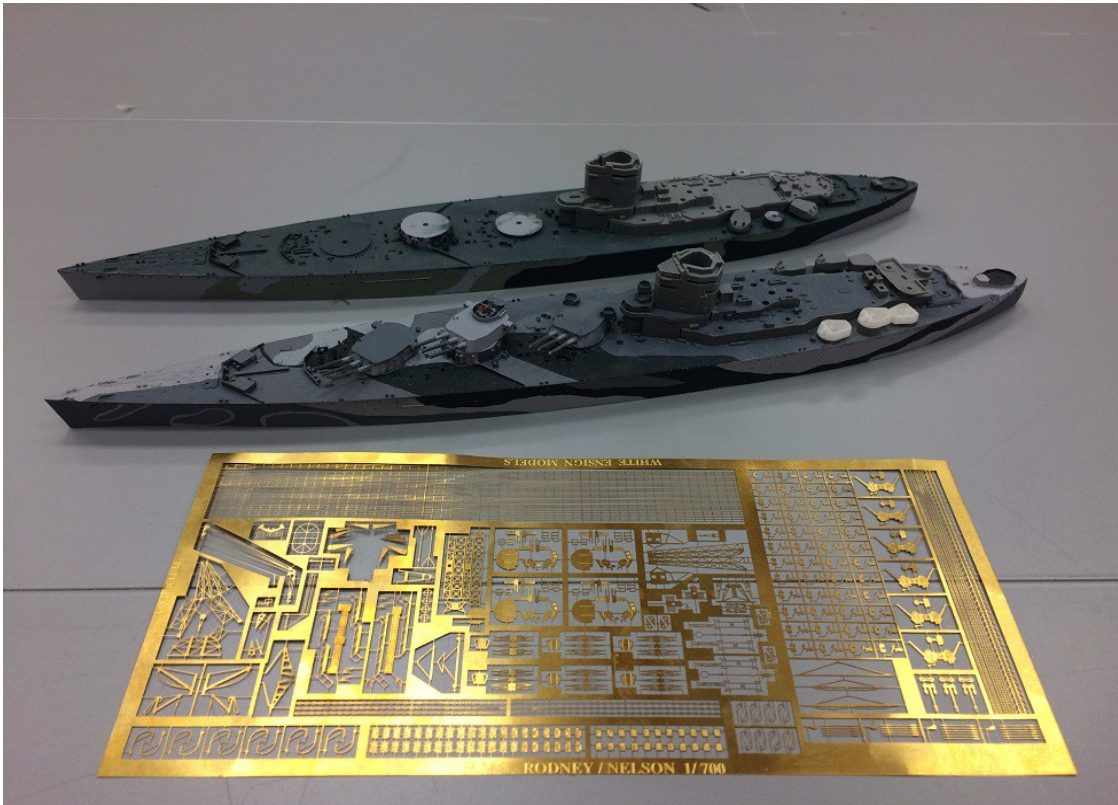




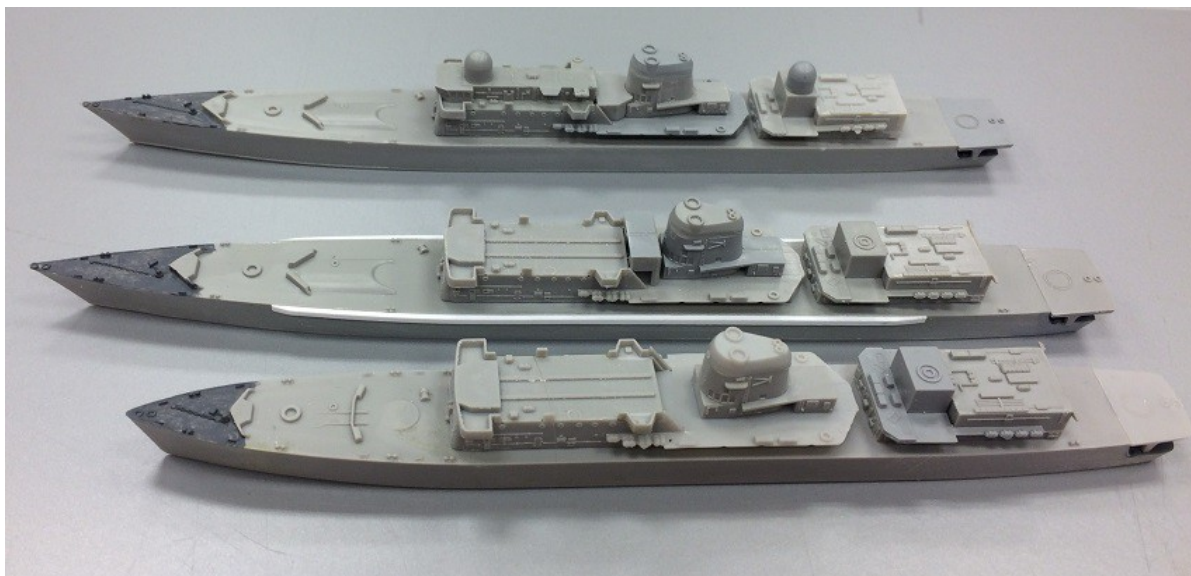
As it is as of now.

Paints used were Lifecolor Royal Navy WWII, Eastern Approach "early war" set 1 and Vallejo Model Color.

## Last Months Meeting Pics



John Currie - Tamiya 1/700 scale HMS Nelson and Rodney + White Ensign PE.



John Currie - Skywave/Dragon/Revell 1/700 scale HMS York, Gloucester and Exeter.



Tom Wingate - Trumpeter 1/32 scale - Mig 23 Flogger.



Tom Wingate - Monogram 1/48 scale - F-101C/RF-101C using KAE conversion.



Tom Wingate - Revell 1/25 scale - 67 Corvette.



Jim Hamilton - 1/48 scale - Tamiya Russian truck with troops, UM Hucks Starter Truck, Hobby Craft I-16.



Hub Plott - Roden 1/48 scale - He-51.



Hub Plott - Classic Airframes 1/48 scale - Arado Ar-68.



Rick Broome - AMT 1/24 scale - Custom Griswold Christmas Vacation car, base kit was the Ecto 1.

Thats all Folks, Hopefully see you at the next meeting :)